



December News 2009



Mahone Sing A Long December 9th -Holiday Kickoff!

Special Dates to Remember

- Dec 9th
Mahone Sing-A-Long 6:30 to 8:30
- December Closings
12/24, 25,
(Christmas Break)
12/31 & 1/1/2010
(New Year's)
- No Charge for Closings



Friday, January 29th
Closed for Cleaning Day

Gifts for Parents

All of the classrooms are making gifts for parents... please be aware that some of them need supplies/photos from you. We would like everyone to participate, so please check your child's Parent Board for further information.

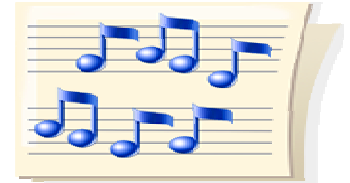


We hope that everyone enjoyed the Thanksgiving Holiday, but as the winds kick up and the temperatures begin to dip—we look forward to the winter Holiday Season. We wanted to remind you that we will start off the month with the children's Christmas Program at Mahone Middle School ... Wednesday, December 9th from 6:30 to 8:30. The older kids (Cardinals, Mockingbirds, Starlings, Hawks, Woodpeckers and Roadrunners) will be singing Holiday songs

for their family and friends. Everyone in the Center is invited to come, and the baby room teachers will be the "hostesses" of the evening, serving up punch and cookies to all the guests.

We would like to ask, since we need to help get things settled at Mahone, if everyone could be picked up by 5:15 at the latest. We are all required to work that evening (all 48 of us) and would really like to be able

to arrive there in enough time to set up before families arrive, so with your help, we can get out of here and over there in time. We would appreciate if you could please make arrangements to have your child picked up just that Wednesday, by 5:15 to allow us a little time to get from Extended Love to Mahone. Thank you so much, in advance for your cooperation in this matter.



A word about Holiday Traditions...

We celebrate Christmas with the children here at ELCCDC, and would like to incorporate other Holiday Traditions. If you celebrate a different holiday, please talk to your child's teacher so we can share your family traditions with the class.

God Bless!



We will be wrapping up the Operation Gratitude donations after the Holiday Sing-A-Long, so if you are interested in donating items to the Military Care Package Program, please drop them in the hallway. Those attending the Sing-A-Long are asked to have each guest bring something to deposit in the barrels at the entrance of the auditorium.

School Closings...

It is rare that we close ELCCDC (once in about 10 years...) but, if the need should arise, stay tuned to **FOX 6 CHANNEL 12 OUR WEBSITE**

I will announce it by 5:30 am. If no announcement is made... You may assume we are open. Please try not to call and tie up the phone line. Check the resources above first.



LABEL YOUR CHILD'S BELONGINGS PLEASE.

Fundraiser News

The pie fundraiser was a great success. The new Keri Security system was an installation and hardware cost of \$1,700. The cards and fobs are an additional cost. The pie fundraiser brought in about \$1,200. So, we covered most of the cost with the pie fundraiser.

So, thank you for your help and support with the fundraiser, it took a majority of the financial burden off our already tight budget.

Ann